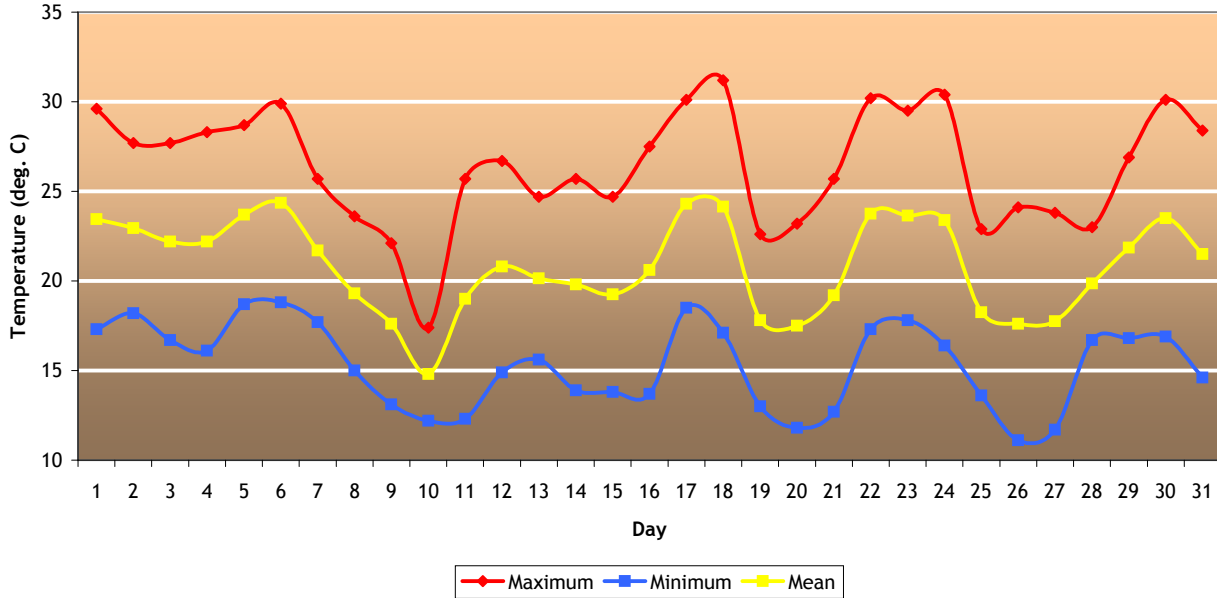
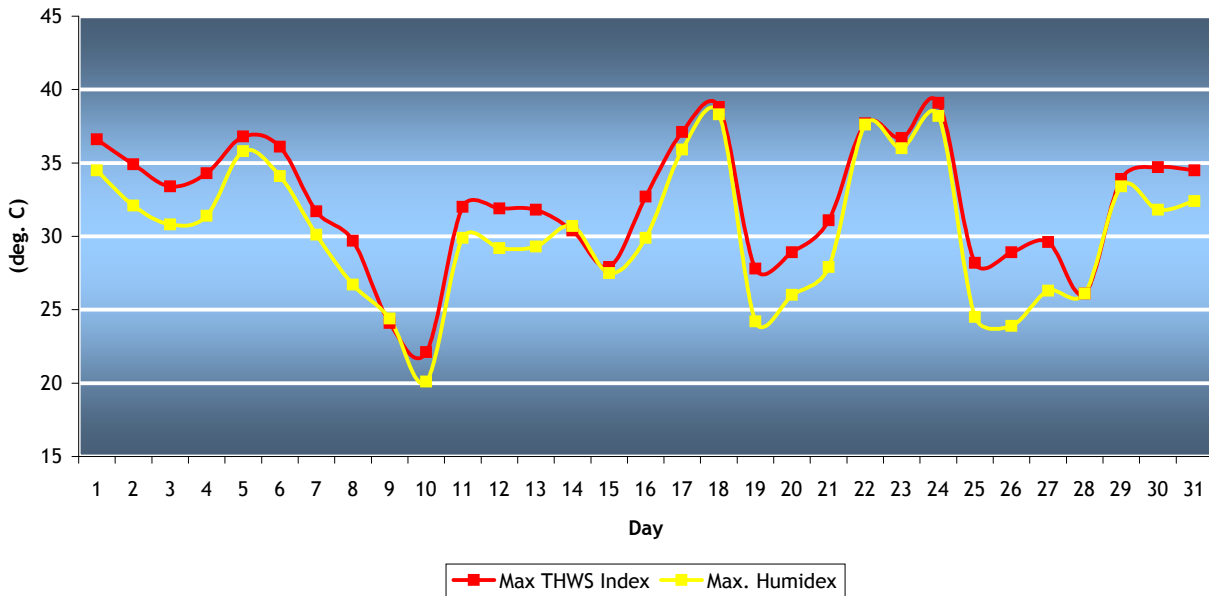


Toronto East York August Temperature 2008



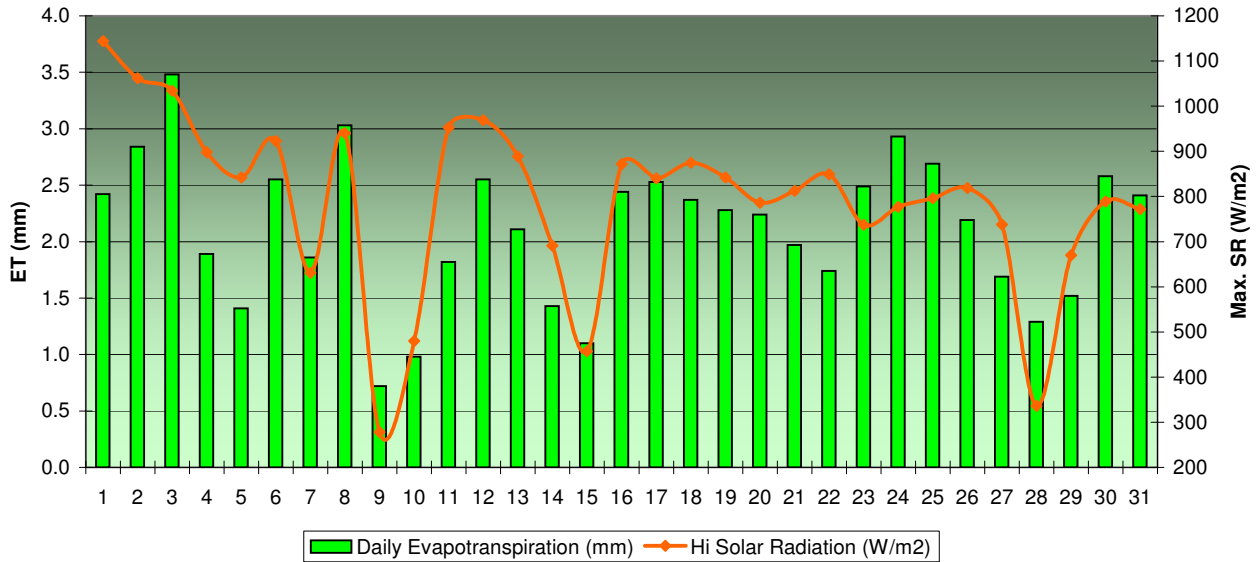
| | | | |
|-----------------|------------------|----------------------------|------------------|
| Mean Max | 26.4 deg. C | Hottest Day (highest mean) | 24.4 deg. C (6) |
| Mean Min | 15.3 deg. C | Coollest Day (lowest mean) | 14.8 deg. C (10) |
| Ave. Mean | 20.8 deg. C | Greatest Temp. Range | 14.1 deg. C (18) |
| Dept. from Nrml | -0.5 deg. C | Least Temp. Range | 5.2 deg. C (10) |
| Highest Max | 31.2 deg. C (18) | HDD | 27.5 |
| Lowest Min | 11.1 deg. C (26) | CDD | 89.2 |

Toronto East York Maximum Humidex and THSW Indices August 2008



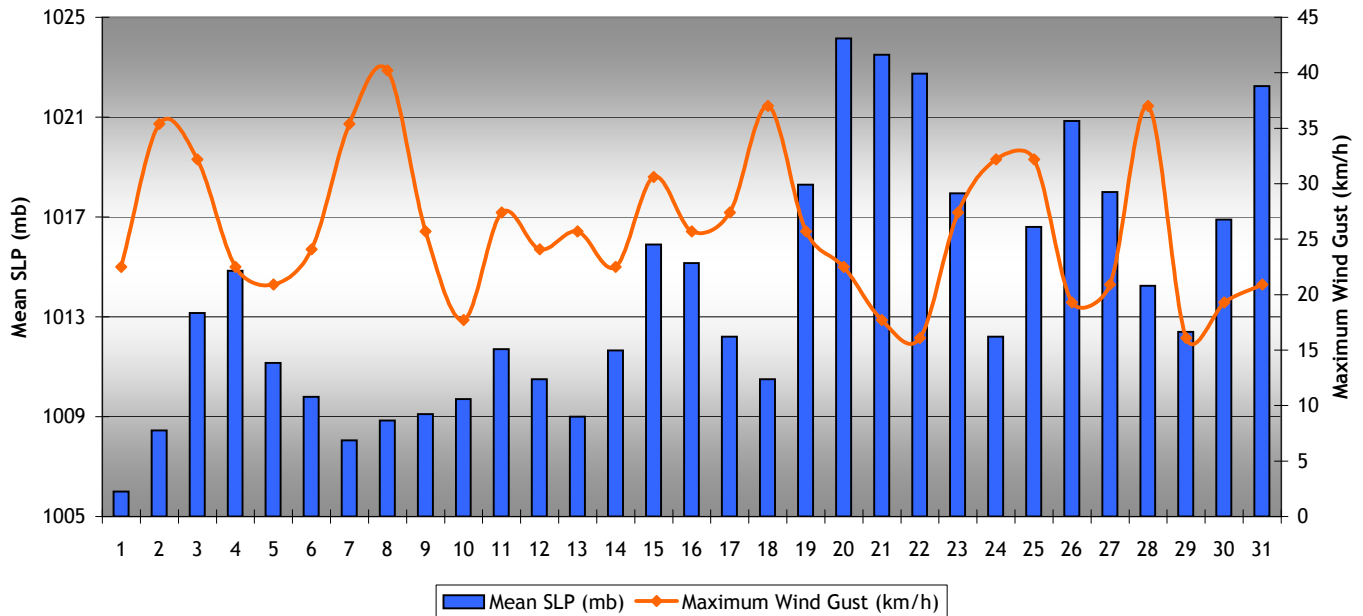
| | |
|-------------------------------------------------------------------------|------------|
| Highest Humidex | 38.3 (18) |
| Highest THSW Index (combination of Temperature, Humidity, Sun and Wind) | 39.1 (24) |
| Most Humid Day (highest mean RH%) | 81.5% (10) |
| Least Humid Day (lowest mean RH%) | 54.0% (26) |

Toronto East York Daily Evapotranspiration (mm) and Maximum Solar Radiation (W/m²) August 2008



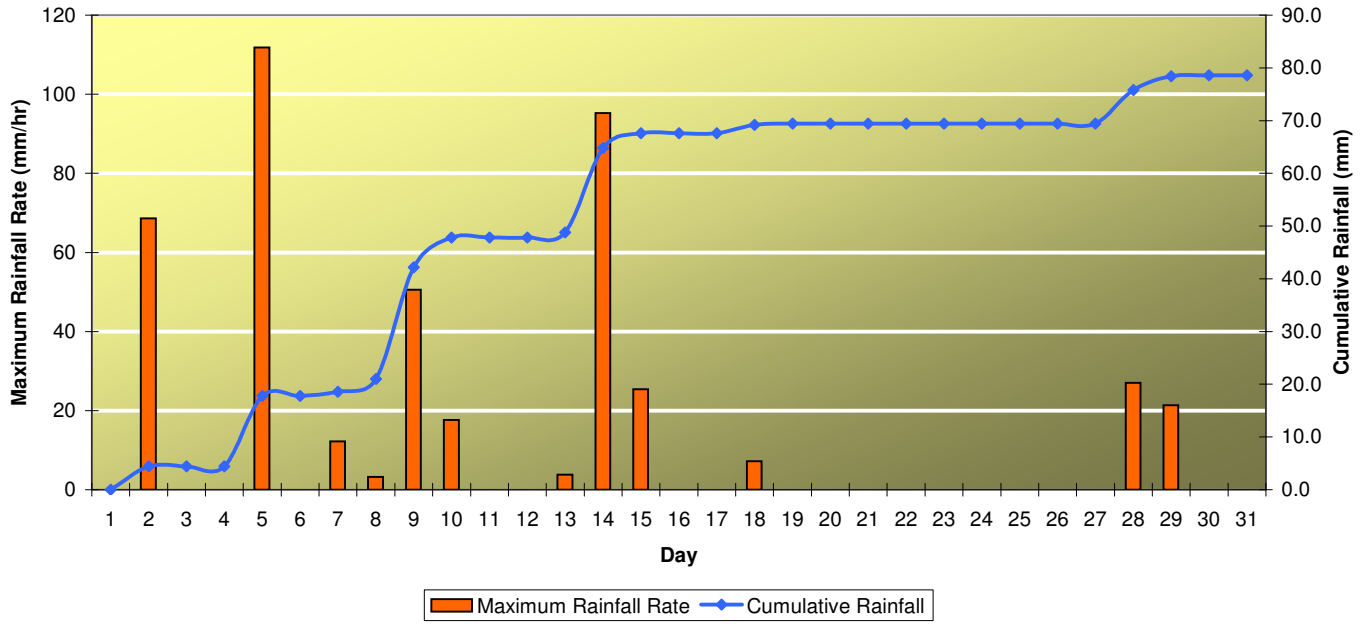
| | | | |
|-----------------------------|-------------|---------------------------|---------------------------|
| Total ET | 65.6 mm | Highest Solar Radiation | 1144 W/m ² (1) |
| Greatest 24-hour ET | 3.5 mm (3) | Highest Solar Energy | 1.64 Langley (1) |
| Total Bright Sunshine Hours | 169.3 hours | Most Daily Sunshine Hour | 8.7 hrs (13) |
| | | Least Daily Sunshine Hour | 2.2 hrs (9) |

Toronto East York Mean SLP (mb) and Maximum Wind Gust (km/h) August 2008



| | | | | | |
|-------------|----------------|--------------------|-------------|----------------------------|---------------|
| Highest SLP | 1025.7 mb (20) | Greatest SLP Range | 9.6 mb (19) | Highest Wind Gust | 40.2 km/h (8) |
| Lowest SLP | 1004.9 mb (1) | Least SLP Range | 1.8 mb (29) | Predominant Wind Direction | N |

Toronto East York Rainfall August 2008



| | |
|--------------------------|-----------------|
| Total Monthly Rainfall | 78.6 mm |
| Highest 24-hour Rainfall | 21.2 mm (9) |
| Highest Rainfall Rate | 111.8 mm/hr (5) |