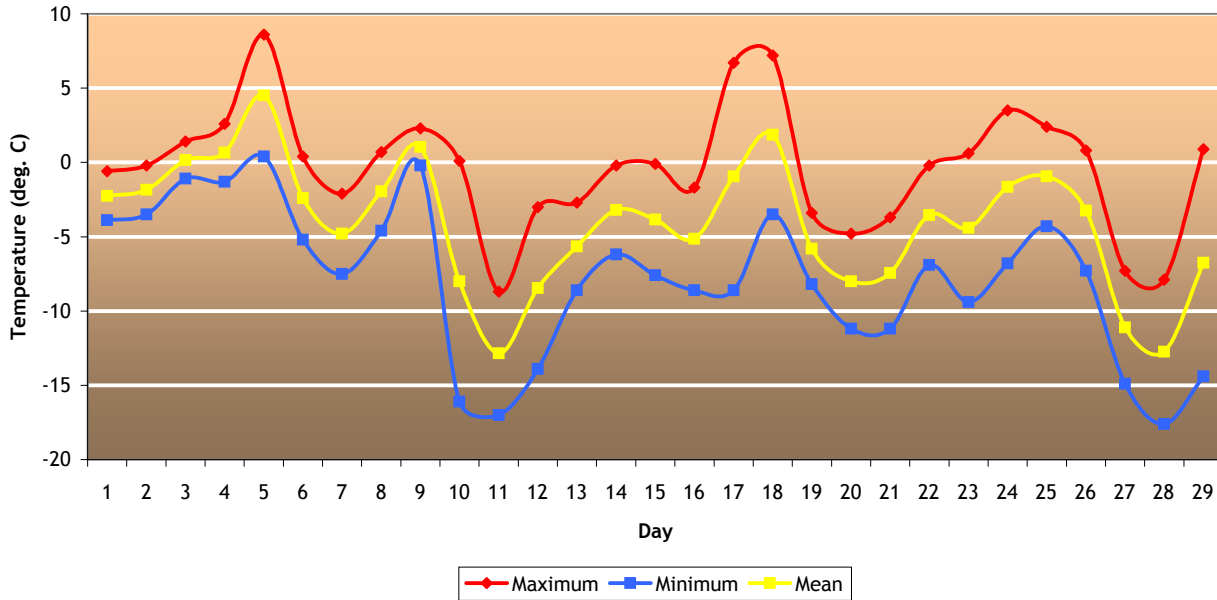
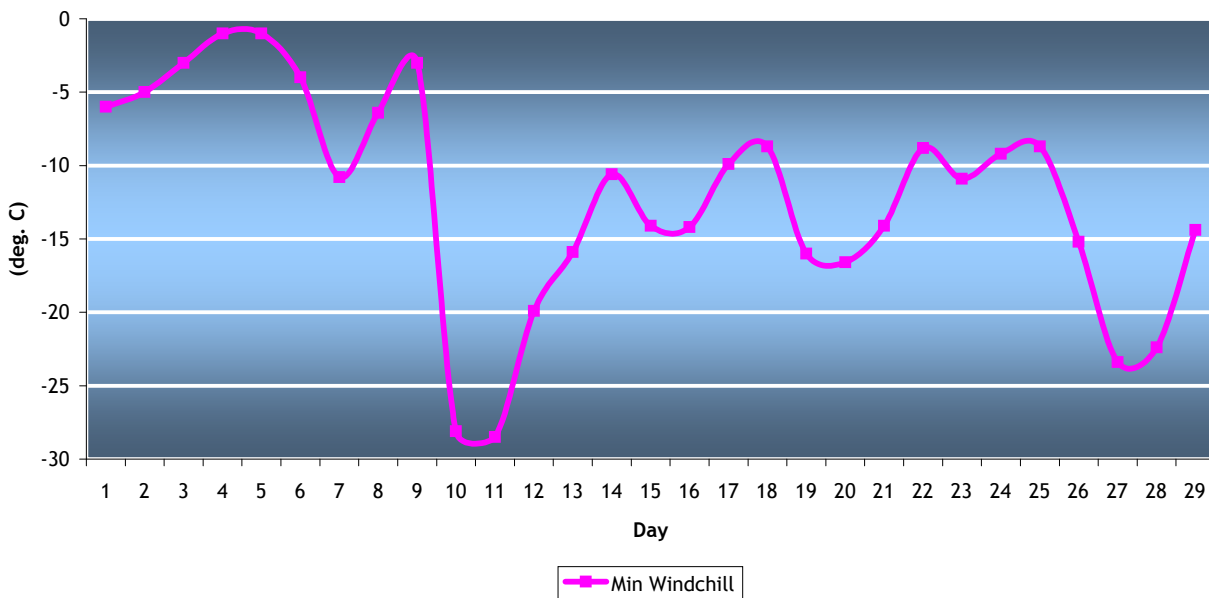


Toronto East York February Temperature 2008



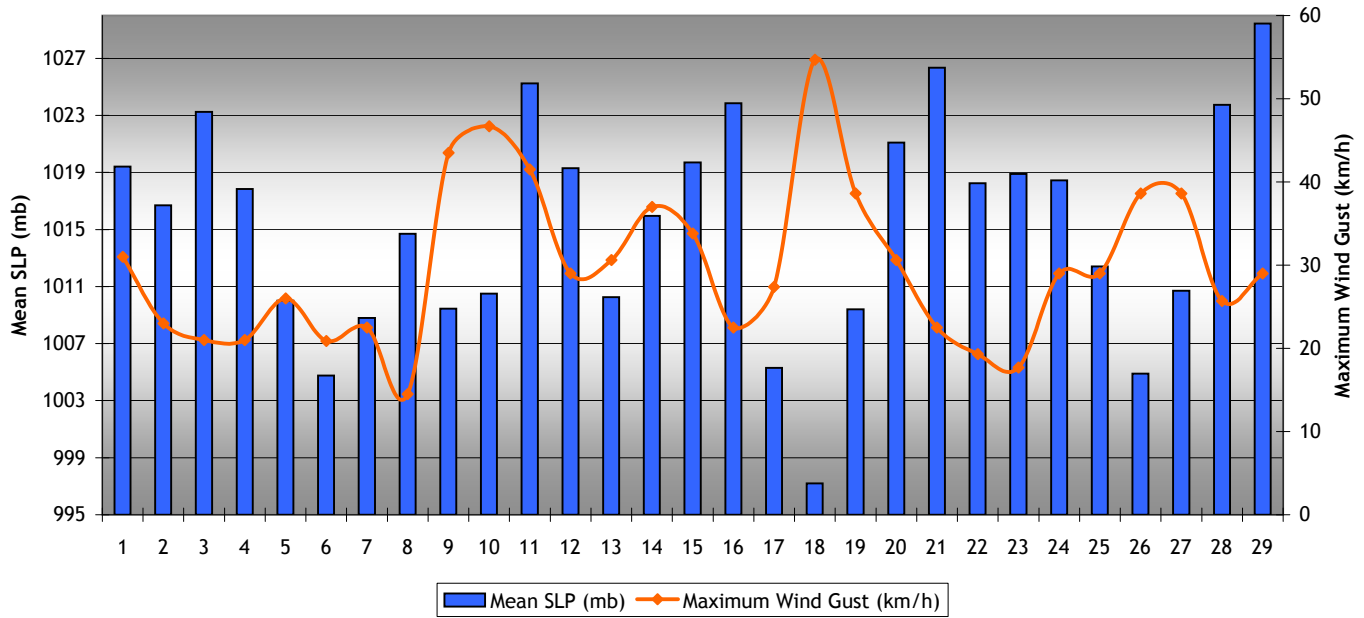
| | | | |
|-----------------|-------------------|----------------------------|-------------------|
| Mean Max | -0.3 deg. C | Hottest Day (highest mean) | 4.5 deg. C (5) |
| Mean Min | -7.9 deg. C | Coollest Day (lowest mean) | -12.9 deg. C (11) |
| Ave. Mean | -4.1 deg. C | Greatest Temp. Range | 16.2 deg. C (10) |
| Dept. from Norm | -0.9 deg. C | Least Temp. Range | 2.5 deg. C (3) |
| Highest Max | 8.6 deg. C (5) | HDD | 649.5 |
| Lowest Min | -17.6 deg. C (28) | CDD | 0.0 |

Toronto East York Minimum Windchill February 2008



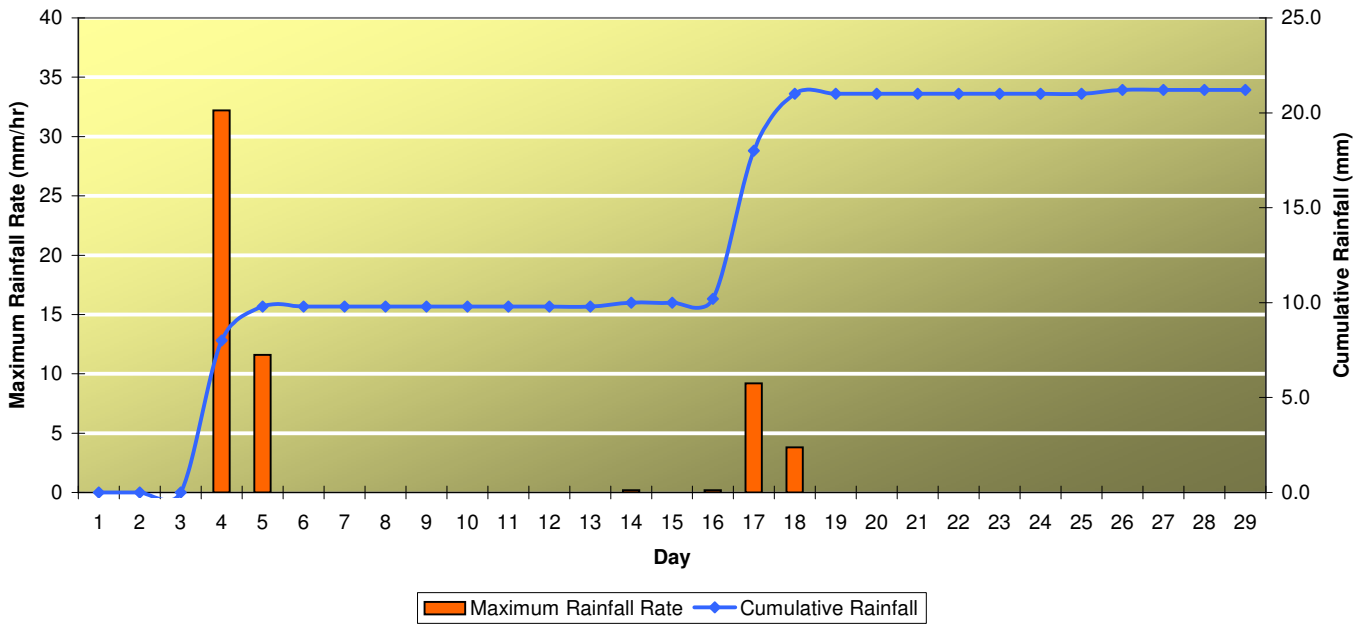
| | |
|-----------------------------------|-------------------|
| Lowest Windchill | -28.5 (11) |
| Most Humid Day (highest mean RH%) | 92.0% (6) |
| Least Humid Day (lowest mean RH%) | 61.0 % (16,27,28) |

Toronto East York Mean SLP (mb) and Maximum Wind Gust (km/h) February 2008



| | | | | | |
|-------------|----------------|--------------------|--------------|-------------------|----------------|
| Highest SLP | 1031.2 mb (12) | Greatest SLP Range | 27.4 mb (17) | Highest Wind Gust | 54.7 km/h (18) |
| Lowest SLP | 990.6 mb (18) | Least SLP Range | 1.5 mb (29) | | |

Toronto East York Rainfall February 2008



| | |
|--------------------------|----------------|
| Total Monthly Rainfall | 21.2 mm |
| Highest 24-hour Rainfall | 8.0 mm (4) |
| Highest Rainfall Rate | 32.0 mm/hr (4) |