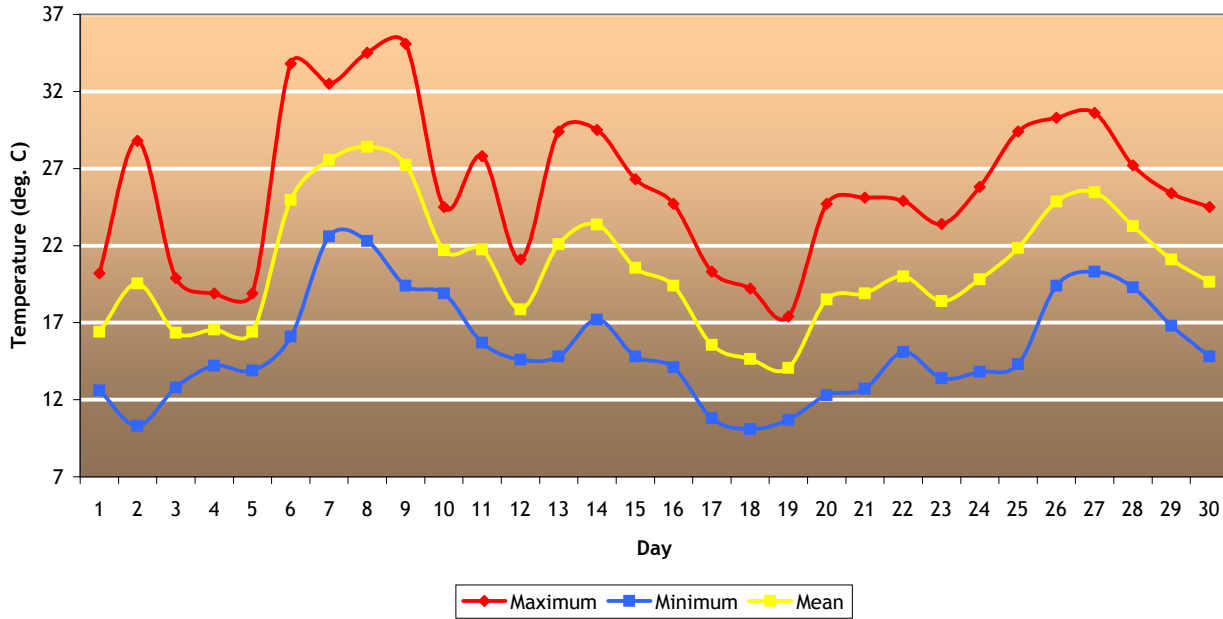
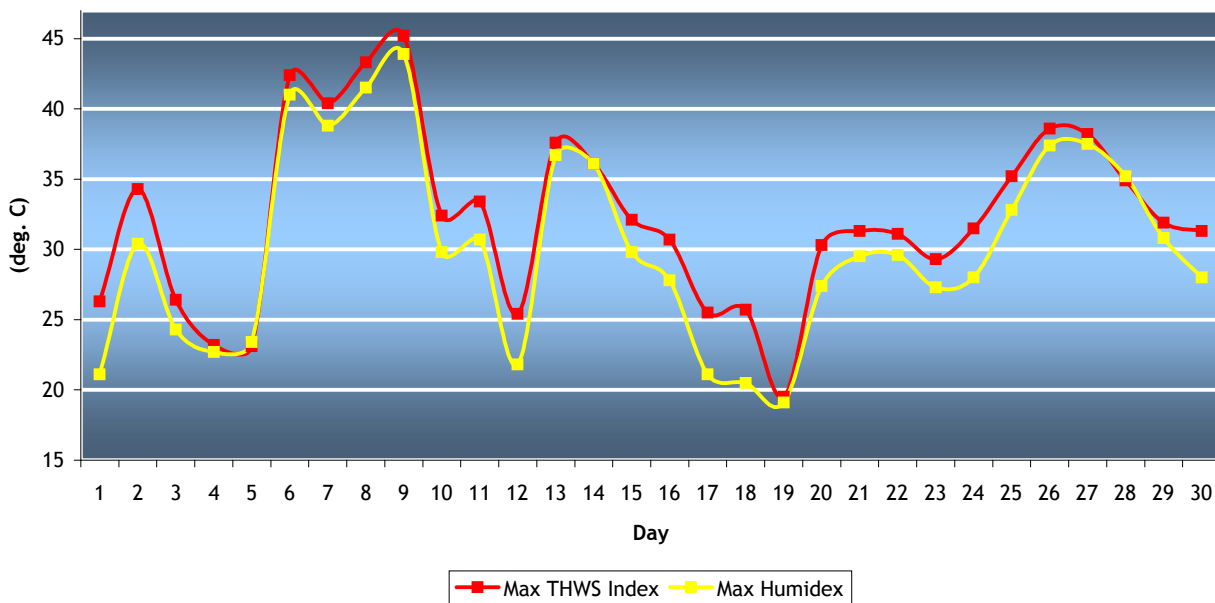


Toronto East York June Temperature 2008



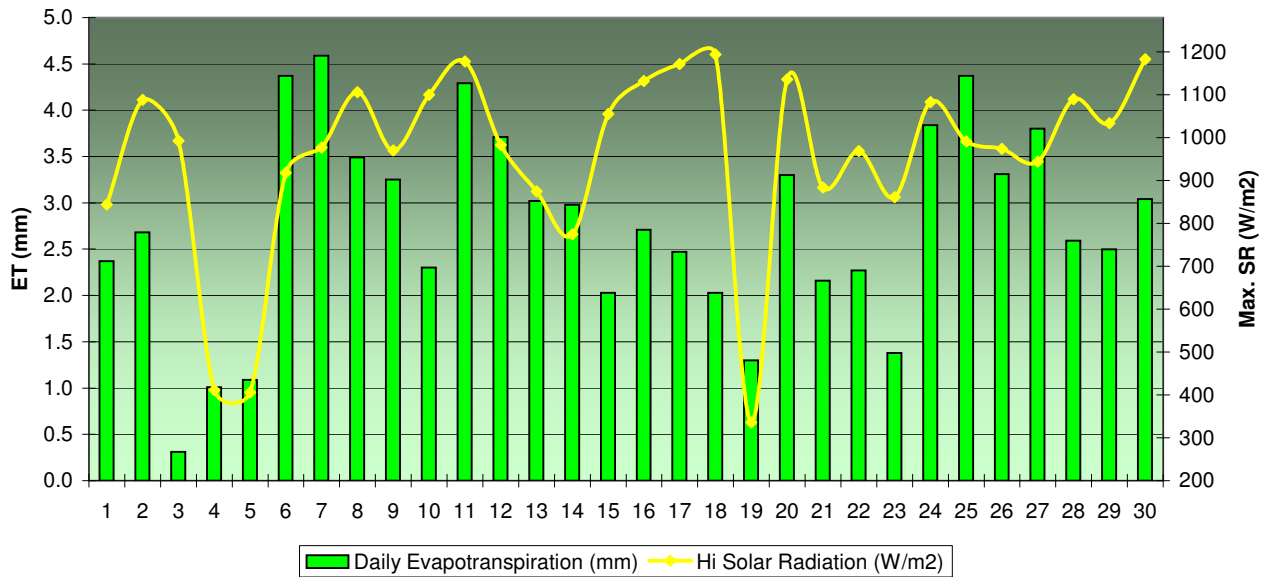
Mean Max	25.8 deg. C	Hottest Day (highest mean)	28.4 deg. C (8)
Mean Min	15.3 deg. C	Coollest Day (lowest mean)	14.1 deg. C (19)
Ave. Mean	20.5 deg. C	Greatest Temp. Range	18.5 deg. C (2)
Dept. from Nrml	1.3 deg. C	Least Temp. Range	4.7 deg. C (4)
Highest Max	35.1 deg. C (9)	HDD	35.6
Lowest Min	10.1 deg. C (18)	CDD	88.7

Toronto East York Maximum Humidex and THSW Indices June 2008



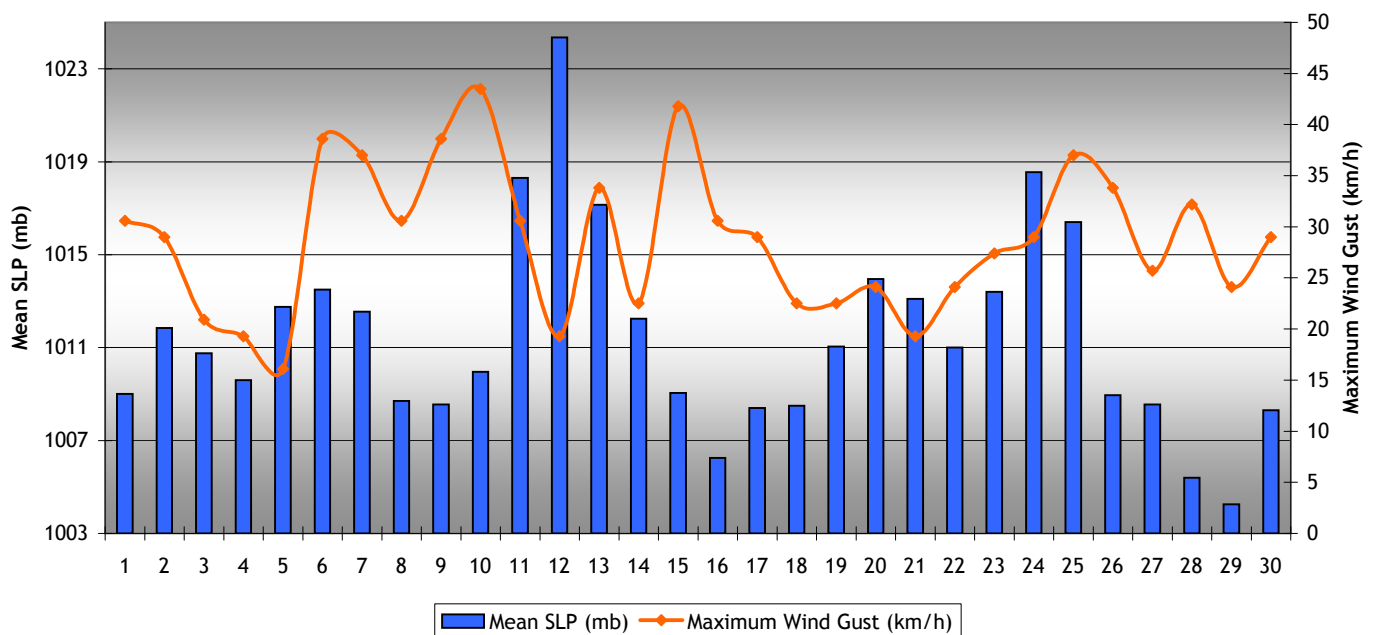
Highest Humidex Index	43.9 (9)
Highest THSW Index (combination of Temperature, Humidity, Sun and Wind)	45.2 (9)
Most Humid Day (highest mean RH%)	85.5% (5)
Least Humid Day (lowest mean RH%)	55.0% (2)

Toronto East York Daily Evapotranspiration (mm) and Maximum Solar Radiation (W/m²) June 2008



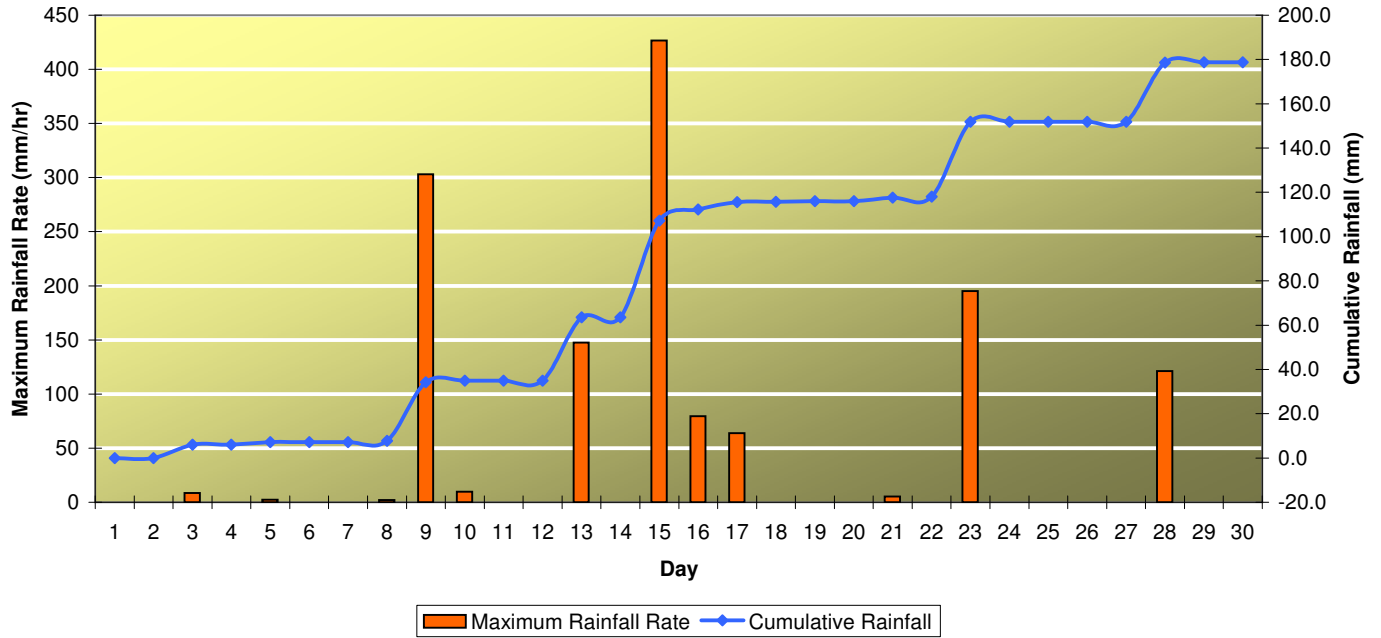
Total ET	82.6 mm	Highest Solar Radiation	1194 W/m ² (18)
Greatest 24-hour ET	4.6 mm (7)	Highest Solar Energy	1.71 Langley
Total Bright Sunshine Hours	221.8 hours	Most Daily Sunshine Hour	10.6 (12)
		Least Daily Sunshine Hour	2.9 (3)

Toronto East York Mean SLP (mb) and Maximum Wind Gust (km/h) June 2008



Highest SLP	1027.4 mb (12)	Greatest SLP Range	9.4 mb (25)	Highest Wind Gust	43.5 km/h (10)
Lowest SLP	1002.8 mb (28)	Least SLP Range	1.8 mb (17)	Predominant Wind Direction	SW

Toronto East York Rainfall June 2008



Total Monthly Rainfall	178.8 mm
Highest 24-hour Rainfall	43.6 mm (15)
Highest Rainfall Rate	426.6 mm (15)