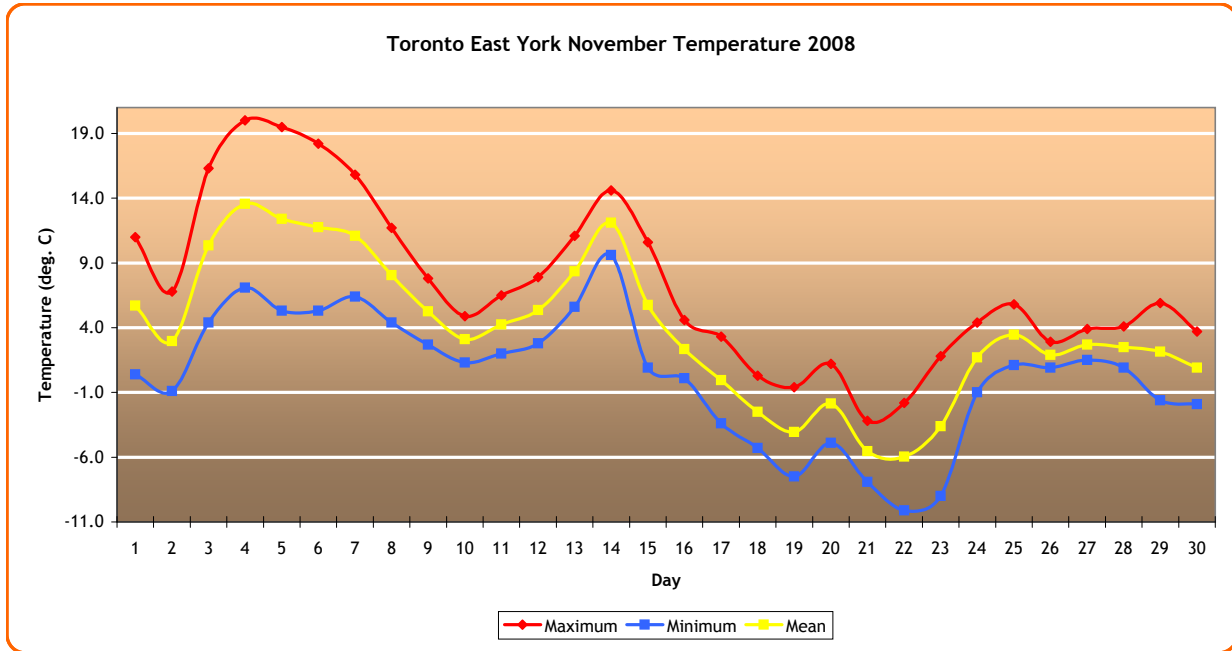
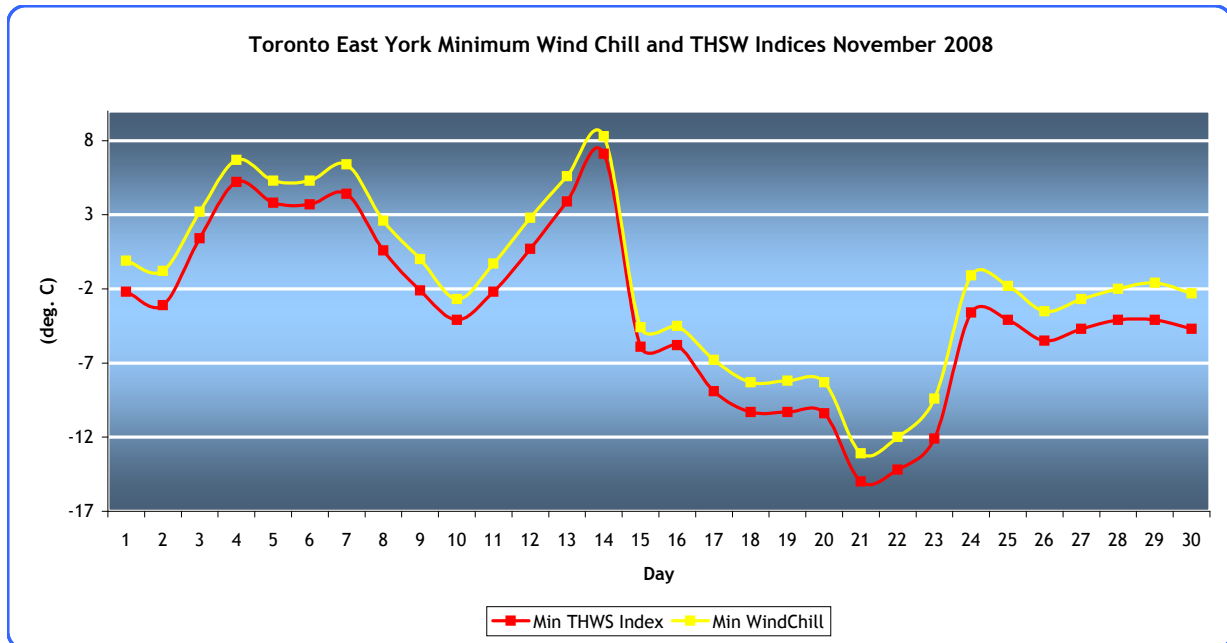


NOVEMBER

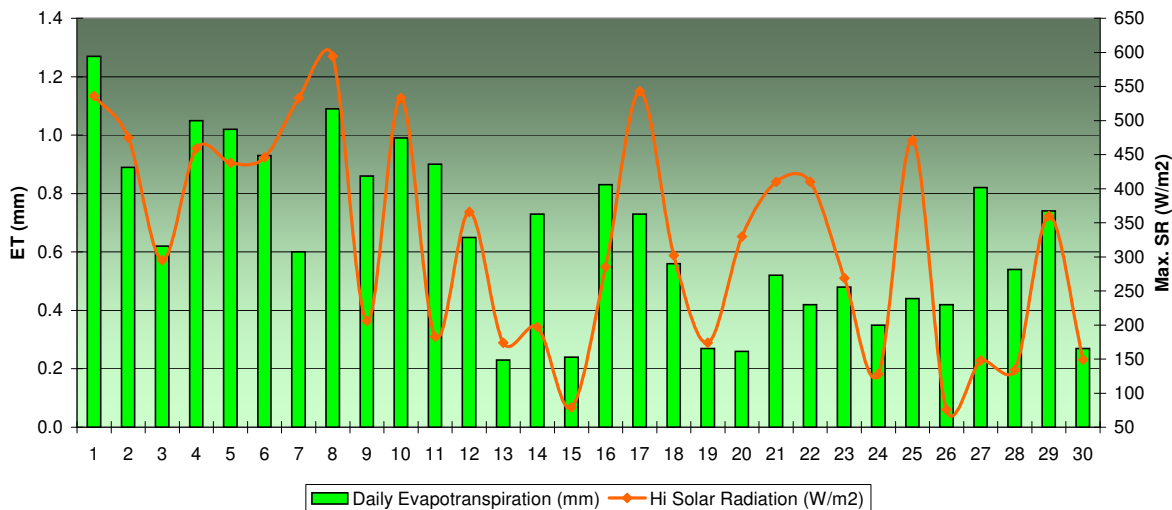


Mean Max	7.3 deg. C	Hottest Day (highest mean)	13.6 deg. C (4)
Mean Min	0.3 deg. C	Coolest Day (lowest mean)	-6.0 deg. C (22)
Ave. Mean	3.8 deg. C	Greatest Temp. Range	14.2 deg. C (5)
Dept from Nrml	-1.0 deg. C	Least Temp. Range	2.0 deg. C (26)
Highest Max	20.0 deg. C (4)	HDD	440.5
Lowest Min	-10.1 deg. C (22)	CDD	0.1



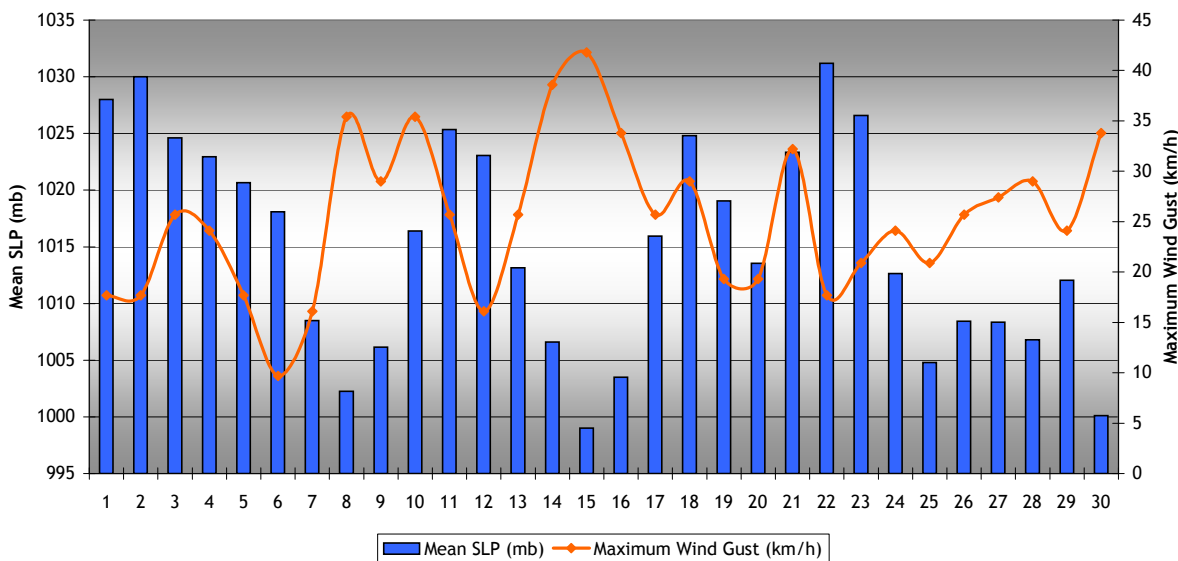
Lowest Wind Chill	-13.1 (21)
Lowest THSW Index (combination of Temperature, Humidity, Sun and Wind)	-15.0 (21)
Most Humid Day (highest mean RH%)	92% (13)
Least Humid Day (lowest mean RH%)	63.5% (22)

Toronto East York Daily Evapotranspiration (mm) and Maximum Solar Radiation (W/m<sup>2</sup>)  
November 2008

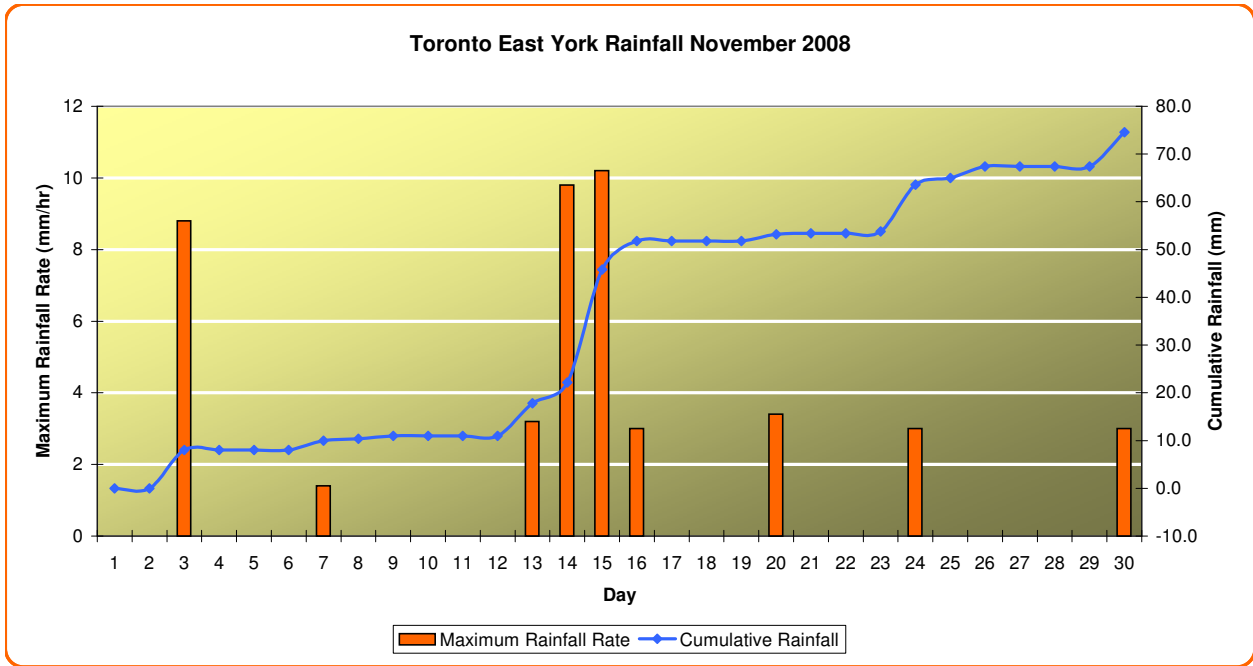


Total ET	19.7 mm	Highest Solar Radiation	594 W/m <sup>2</sup> (8)
Greatest 24-hour ET	1.3 mm (1)	Highest Solar Energy	0.85 Langley (8)
Total Bright Sunshine Hours	57.2 hrs	Most Daily Sunshine Hour	5.1 hrs (1)
		Least Daily Sunshine Hour	0.0 hrs (15,26)

Toronto East York Mean SLP (mb) and Maximum Wind Gust (km/h) November 2008



Highest SLP	1034.8 mb (2)	Greatest SLP Range	21.8 mb (30)	Highest Wind Gust	41.8 km/h (15)
Lowest SLP	989.2 mb (30)	Least SLP Range	2.1 mb (8)	Predominant Wind Direction	N



Total Monthly Rainfall	74.6 mm
Highest 24-hour Rainfall	23.6 mm (15)
Highest Rainfall Rate	10.2 mm/hr (15)